

Black Steel Case Pressure Gauge



Application

MY-S series are high quality dry pressure gauge designed to provide reliable service on non-corrosive and clean medium applications. This model are mostly used in manufacturing or processing industrial, especially for pneumatics process, fabrication, compressed gas and common industrial application.

Technical Specification

Nominal Size: 40,50,63,75,100,150,200,250mm

Accuracy Class: 40..75mm-Class 2.5; 100..250mm-Class 1.6

Ingress Protection: IP32

Connection Size: G1/8,G1/4,G1/2 or NPT or others

Scale Range: Pressure 0..600 bar; Vacuum -1 bar..0; Compound -1..24 bar

Filling: Dry execution

Tube Element Shape: $P \leq 100$ bar in C tube; $P > 100$ bar in helicoid

Operating Temperature: Ambient temperature -10°C .. $+70^{\circ}\text{C}$; Medium temperature 70°C Max.

Temperature Error: Additional error when pressure element temperature deviates from reference temperature $+20^{\circ}\text{C}$ ($+68^{\circ}\text{F}$), is $\pm 0.4\%$ / 10°C (50°F) rising or falling

Over Pressure Limit: 130% of F.S.P ≤ 100 bar; 115% of F.S.P > 100 bar

Dial Graduation: Black graduation on white for single range; Black and red graduation on white for dual ranges

Design Material

Casing and Bezel Ring: Black steel; Chromed steel; Plastic

Sensing Element: Copper alloy

Black Steel Case Pressure Gauge

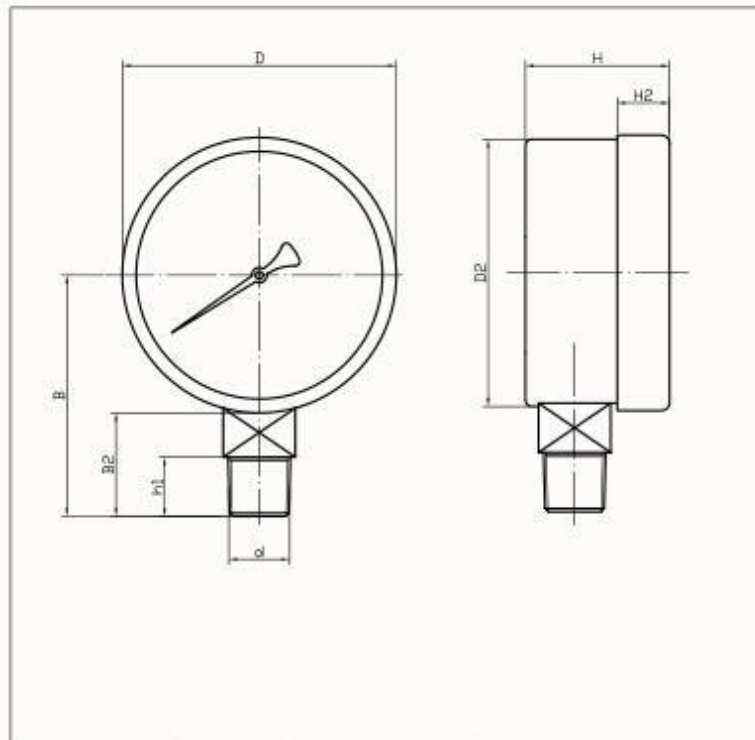
Connection: Brass

Window: Acrylic plastic; Instrument glass

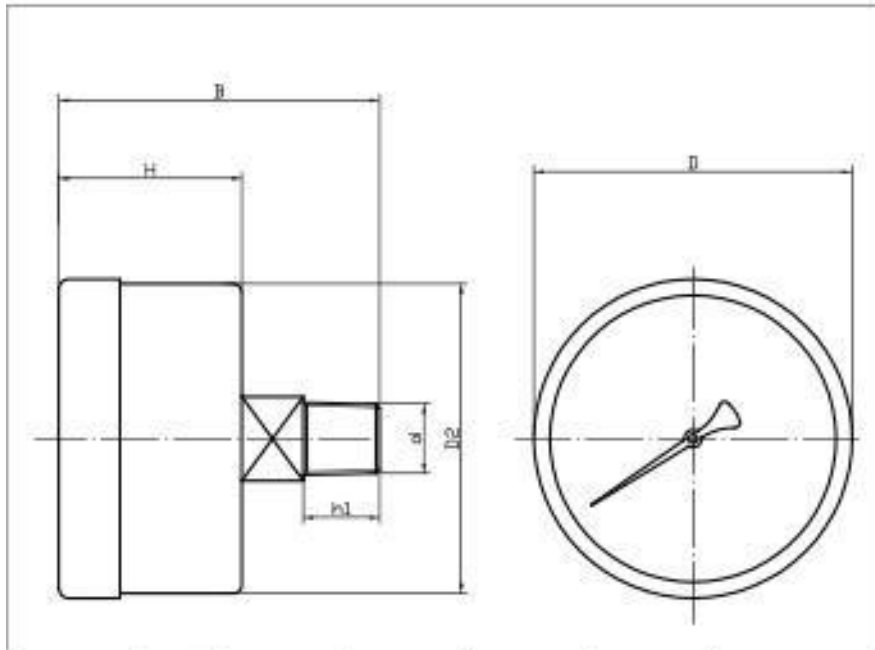
Window gasket: Plastic

Pointer: Black painted aluminum

Dial Plate: Aluminum alloy



普通表(径)	D	H	H2	D2	B	B2	h1	d
1.5"	φ41.8	22	8	φ40.5	33.4	12.5	10	1/8NPT M10X1 1/8PT
2"	φ52.6	28.3	10	φ51.2	43	16.7	10	1/8NPT 1/8PT
					46	19.7	13	1/4NPT M12X1.5
2.5"	φ63.4	28.5	10	φ62	51	19.3	13	1/4NPT M12X1.5
3.5"	φ89	31	12.5	φ87.5	70	25.5	13	1/4NPT M12X1.5
4"	φ100	35	13	φ98.5	73	23	13	1/4NPT M12X1.5
					80	30	20	1/2NPT M20X1.5
4.5"	φ114.3	33	13	φ113	83	25.5	13	1/4NPT 1/4BSPT 1/4BSP
5"	φ125.5	29.5	11.3	φ124	87	24.5	13	1/4NPT 1/4BSPT 1/4BSP
6"	φ150	47.2	42.5	φ148	114	39	20	1/2NPT M20X1.5



普通表 (轴)	D (φ)	H	D2	B	h1	d
1.5"	φ41.8	24	φ41.1	39	10	1/8NPT
2"	φ52.6	28.3	φ51.2	43.5	10	1/8NPT
				46.5	13	1/4NPT
2.5"	φ63.5	28.5	φ62	47.5	13	1/4NPT
3.5"	φ89	31	φ87.5	49.5	13	1/4NPT
4.5"	φ115	34	φ113	55	13	1/4NPT