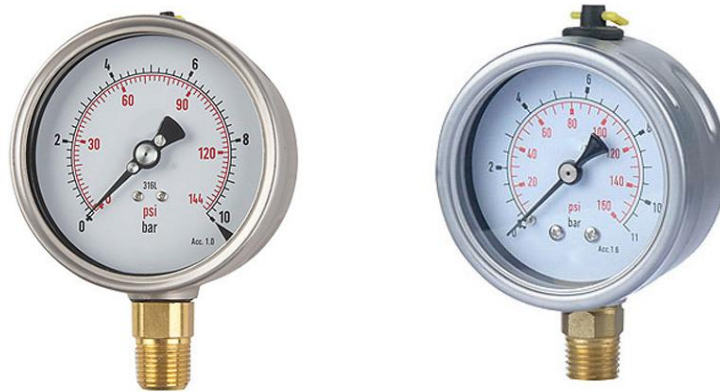


Stainless Steel Case Pressure Gauge



Application

MY-SSC Series is a special design with stainless steel case and copper alloy wetted part and fillable option for extreme vibration application and non-corrosive ambient field condition, with bayonet lock case design. Applicable for pneumatic and hydraulic systems, compressors, engines, pumps, sprinkles system, building automation system and processing unit where vibration is concern.

Technical Specification

Nominal Size: 63, 100 and 150mm

Accuracy Class: Class 1.6, Class 1.0 ($\varphi > 100\text{mm}$)

Ingress Protection: IP65

Connection Size: G1/4, G1/2 or NPT

Scale Range: Pressure 0..1000 bar; Vacuum -1 bar..0; Compound -1..24 bar

Tube Element Shape: $P \leq 100$ bar in C tube; $P > 100$ bar in helicoid

Filling: Dry or liquid filled

Operating Temperature: Ambient temperature -10°C .. $+70^{\circ}\text{C}$; Medium temperature 90°C Max.

Temperature Error: Additional error when pressure element temperature deviates from reference temperature $+20^{\circ}\text{C}$ ($+68^{\circ}\text{F}$), is $\pm 0.4\%$ / 10°C (50°F) rising or falling

Over Pressure Limit: 130% of F.S.P ≤ 100 bar; 115% of F.S.P > 100 bar

Dial Graduation: Black graduation on white for single range; Black and red graduation on white for dual ranges

Design Material

Casing and Bezel Ring: Stainless steel 304

Sensing Element: Copper alloy Connection:

Brass

Window: Tempered glass,

Window Gasket: Industrial rubber seal

Pointer: Black painted aluminum

Dial Plate: Aluminum alloy