

## Vibration-Proof (Liquid Filled) Edged Back Connected Pressure Gauge



Application: Liquid filled pressure gauge mainly used in petroleum chemical industry liquid help to absorb vibration and pressure spikes, increasing the service life of the gauge.

Size: 1.5"(40mm) 2"(50mm), 2.5"(63mm), 3.5"(95mm), 4" (100mm) and 6" (150mm)

Pressure range: 15 to 15,000psi, Vacuum, and compound

Socket: No lead brass lower mount, center back mount or lower back mount

Connection thread: NPT , BSP, BSPT, PT, ZG, or other customized threads

Tube: Phosphor bronze, copper alloy or stainless steel

Case: Stainless steel Bezel:

Removable SS bezel

Window (lens): Polycarbonate or safety glass lens

Liquid: Glycerin, silicone, oil fillable or without liquid

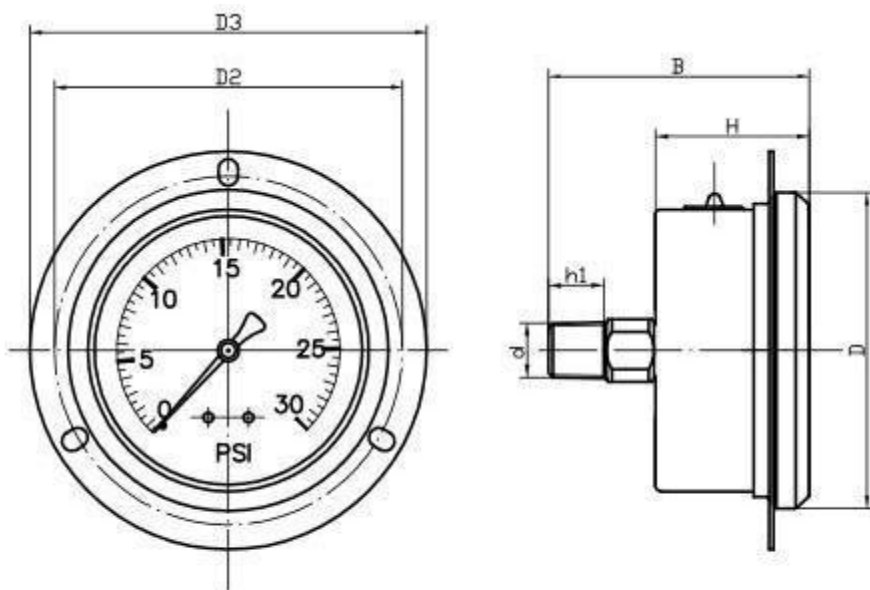
Dial plate: Single and dual scale (psi, kpa, mpa, bar, kg/cm<sup>2</sup>)

Accuracy: +/- 2/3% (ASME B40.1 Grade B); +/-1% (ASME B40.1 Grade 1A)

Bracket: Front flange (edge)

Ambient temperature: Glycerin filled: 5°C to 55°C; silicone filled: -25°C to 55°C

Certificate: CSA low lead listed



	D	D2	D3	B	H	h1	d
2.5"	ø71	ø78	ø89	58.5	34.5	14	M12X1.5 1/4NPT
4"	ø107	ø116	ø132	85	48.5	20	M20X1.5 1/2NPT