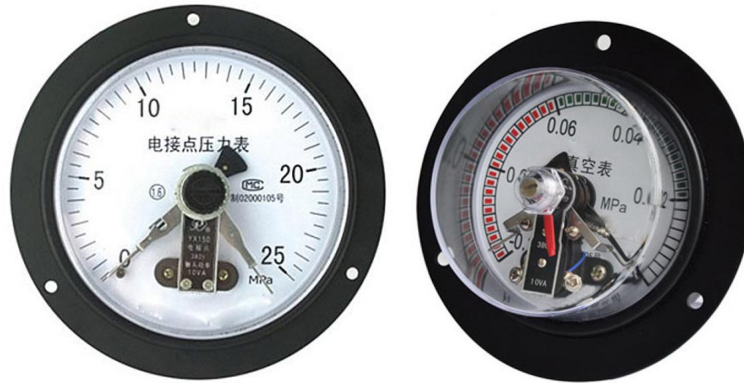


Edged Back Mounted Electric Contact Pressure Gauge



Model MYDJ series pressure gauge is a superior design type with electric contact controller output for pressure controlling and alarming in automatic process. When measured pressure reaches rated value, it outputs signals to operate auto-controlling and alarming device. It is suitable for measuring pressure of gas or liquid and characterized with novel design and reliable structure, good movement stability, durable installation and less maintenance.

Model MYDJ series pressure gauge can also be fillable with oil to deal with severe pulsation and vibration condition. It can combine with diaphragm seal for further usage in corrosive process.

Model MYDJ series pressure gauge consists of measuring system, indicating devices, magnetic devices, adjusting device and other components. When the measured pressure contacts the spring tube, it produces the corresponding elastic deformation and transmits it by the pointing device to showing the pressure value on the gauge dial. The pointer drive instantaneous contact (upper or lower) or separate, causing the control system turned on or off the circuit, then achieving automatic control and alarm transmission.

Specifications:

Pressure range: -0.1- 0 - 60MPa

Dial size: 2.5"; 4"; 6"

Switch type: single switch contact, 2 switch contacts,

Connection thread: brass or stainless steel

Gauge cover: PC or acrylic

Working voltage: 220V or 380V

Contact power: 30VA

Contact type: magnetic, electric and inductive

Working environment: -40 ~ 70 °C

Relative humidity: less than 85%.

Accuracy class: $\pm 1.6\%$ or $\pm 2.5\%$

Case materials: plastic, steel or stainless steel

Tube and socket: brass, stainless steel and 316 stainless steel

Element: brass, stainless steel and 316 stainless steel

Connection thread: NPT , BSP, BSPT and other special specification

Connection: bottom connection, back connection

Windows: acrylic, glass or polycarbonate

Case ingress protection: dry gauge IP54, liquid filled Ip65

Filling: dry or liquid filled

Pointer: black painted aluminum

Filling plug: standard industrial rubber

Dial plate: single and dual scale (psi, kpa, mpa, bar, kg/cm²)