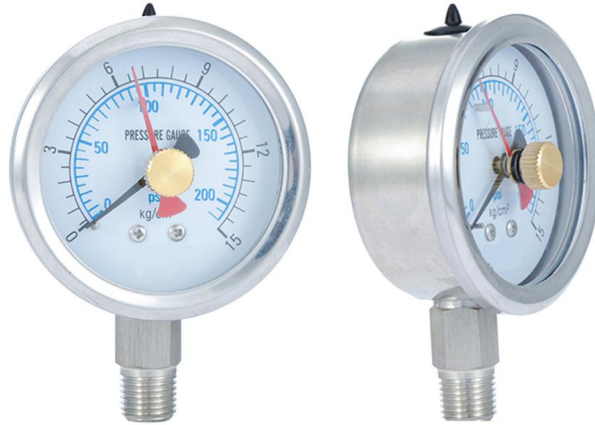


Double Needle Pressure Gauge



Scale range: -0.1~0.5; -0.1~0.9; -0.1~1.5; -0.1~2.4MPa

Thread size: M20x1.5, PT1/4, NPT1/4

Net weight: 0.12kg

Permissible working environment: 5~55°C(filled with Glycerol); -25~55°C(filled with Silicon oil)

Material: stainless steel

Application: petrol, mine, hydraulic industries

Precision: 1.6%